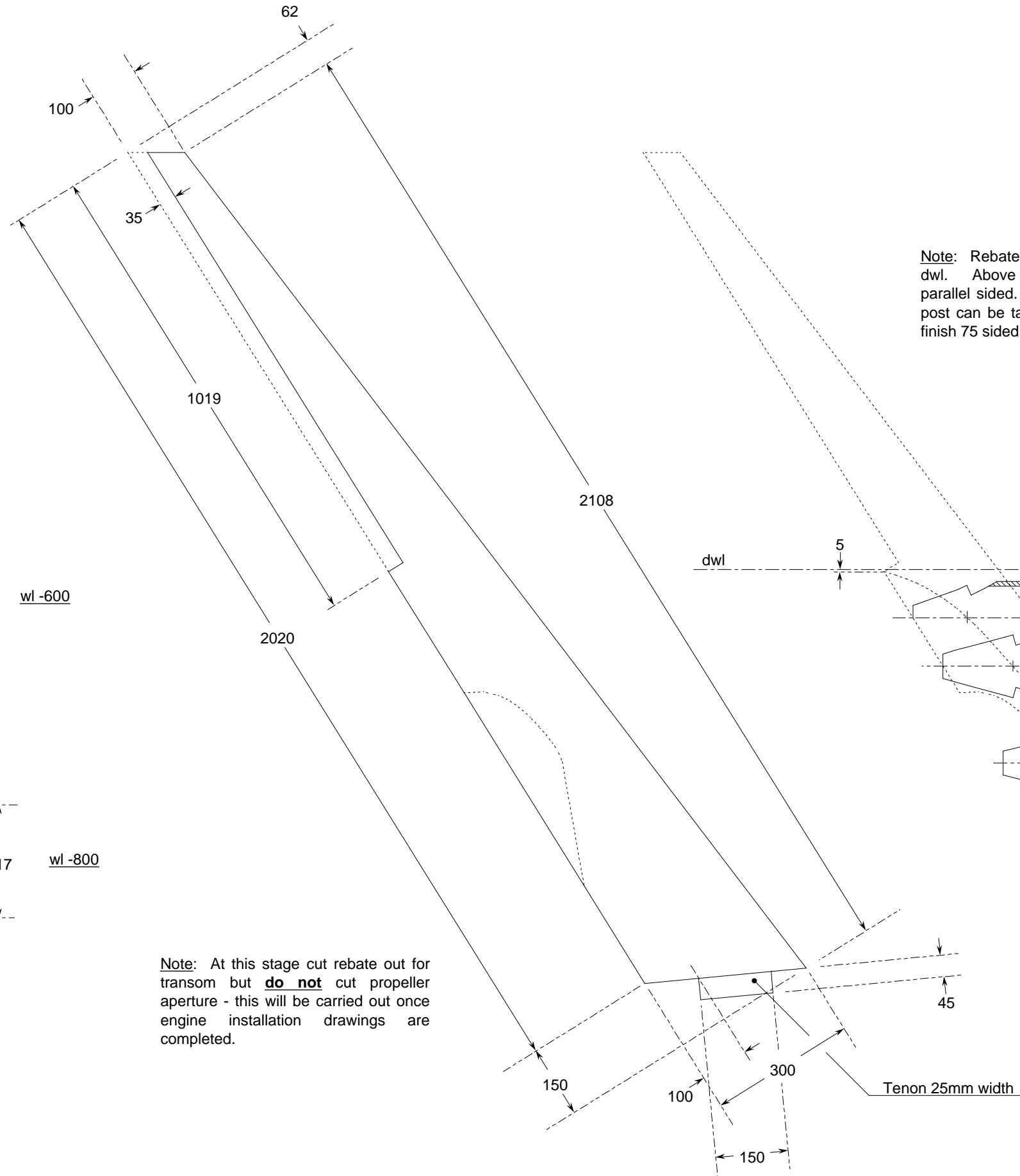
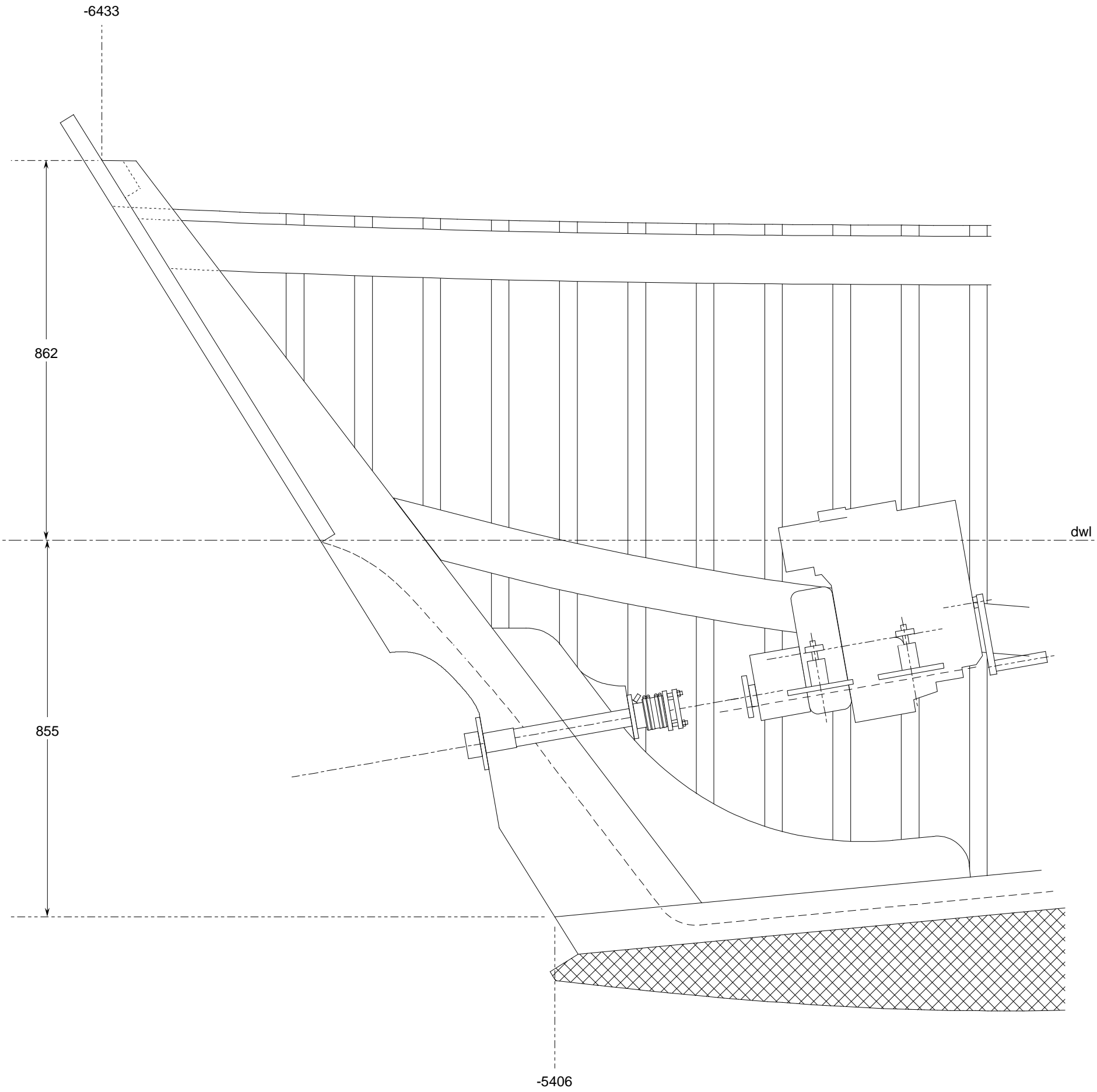


Sternpost Sections Scale 1/5



Note: Rebate runs out at 5mm below dwl. Above that sternpost is 130 parallel sided. Or, if wished, siding of post can be tapered from this point to finish 75 sided at the top.

Note: Make additional 10mm thick slabs bonded each side of sternpost sufficient extent to maintain minimum 55mm of faying surface in rebate.



General Notes:

1. All dimensions are in millimetres unless otherwise noted.
2. The Zero Point is the intersection of the Datum Water Line (dwl) with the stemface.
3. Positions are measured fwd and aft (marked "-") of the Zero Point.
4. Heights are measured above and below (marked "-") the dwl.
5. Offsets are measured each side of the fore-&-aft centreline (marked "C" or c/line).
6. Waterlines are designated "wl" followed by their height.
7. Buttocks are designated "b" followed by their offset.
8. Diagonals are designated "d" followed by their start height on the centreline and their angle to it.
9. Offsets on diagonals are measured down the angle of the diagonal.
10. Offsets are to inside of skin unless noted otherwise.

Whisstock
boats and boat plans
support@whisstock.com

**Boat 140
Sternpost**

Scale 1/10 & 1/5

Date 14/11/2009

Plan No. 140/003/05

Issue No. 01 web

Drawing Size
895 x 305 – 35" x 12"

© Bmarkweb Ltd 2009 All Rights Reserved