

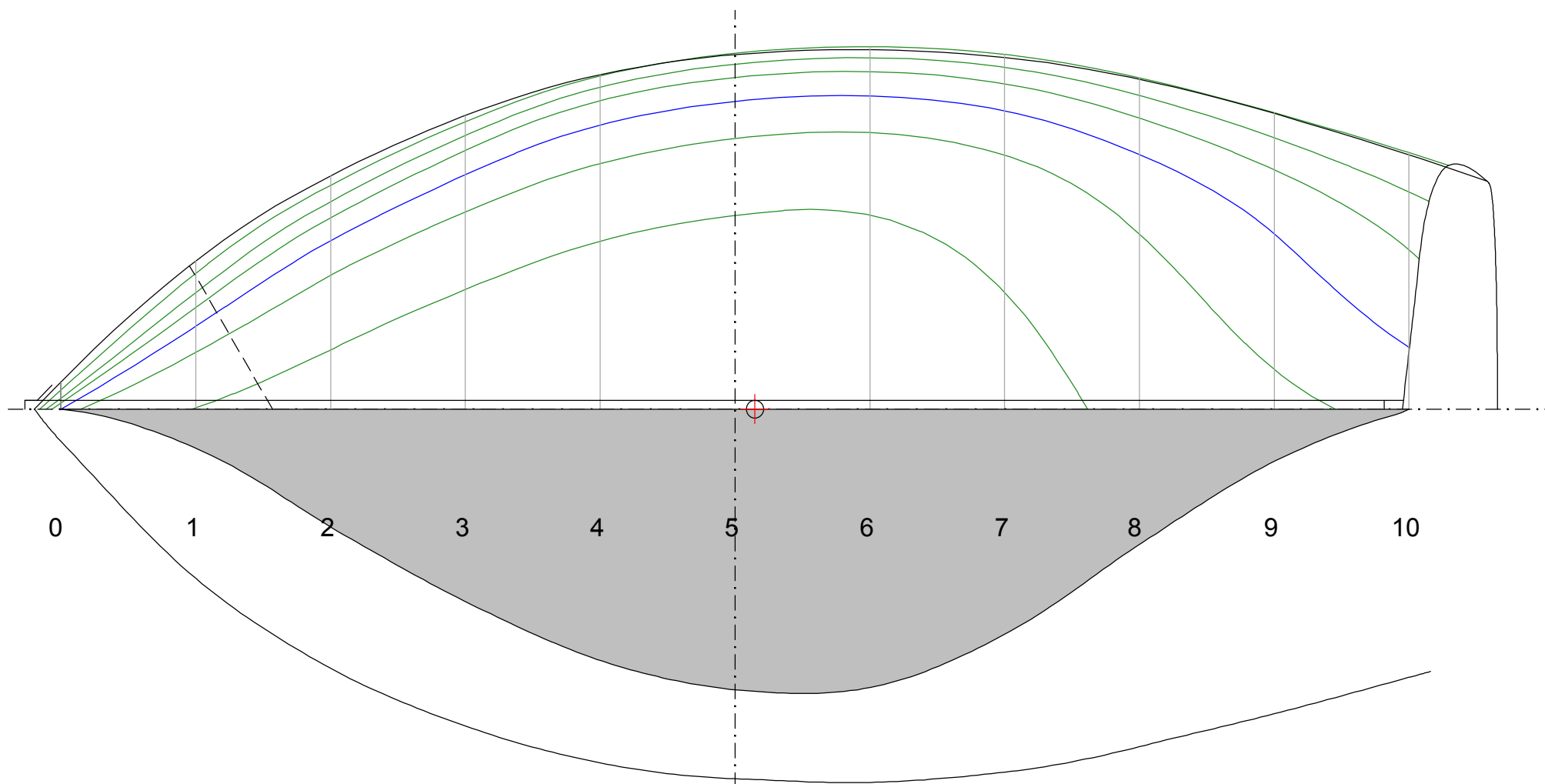
**Version à clin
Planches**

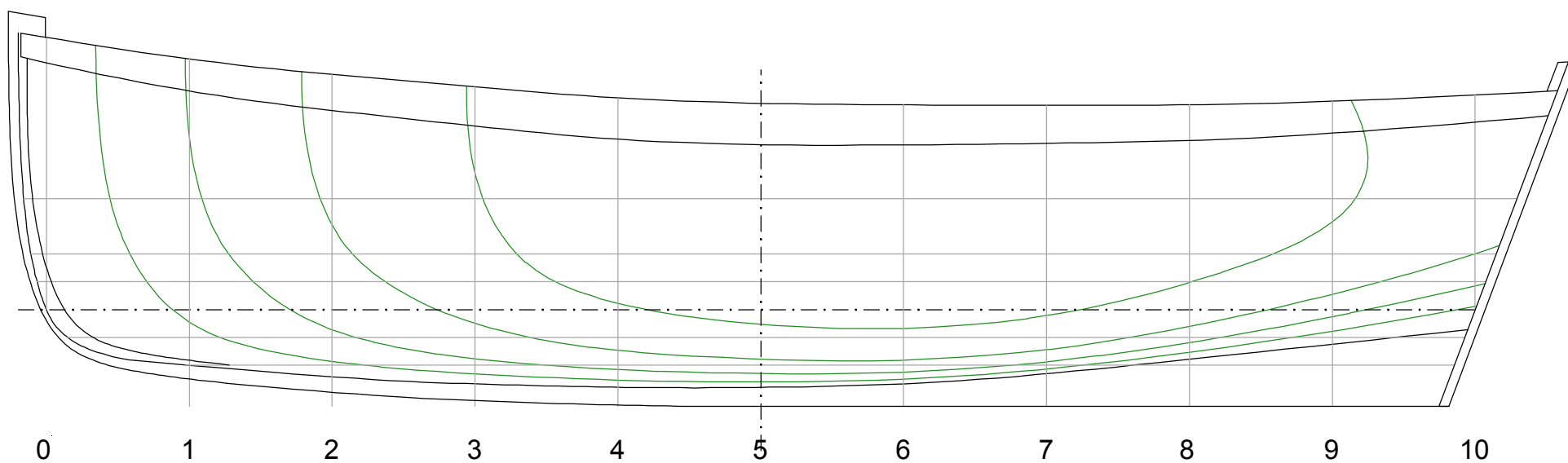
tiknot

Annexe de Yacht de 2,55m

PLAN DE FORME : Lignes d'eau ech 1/10

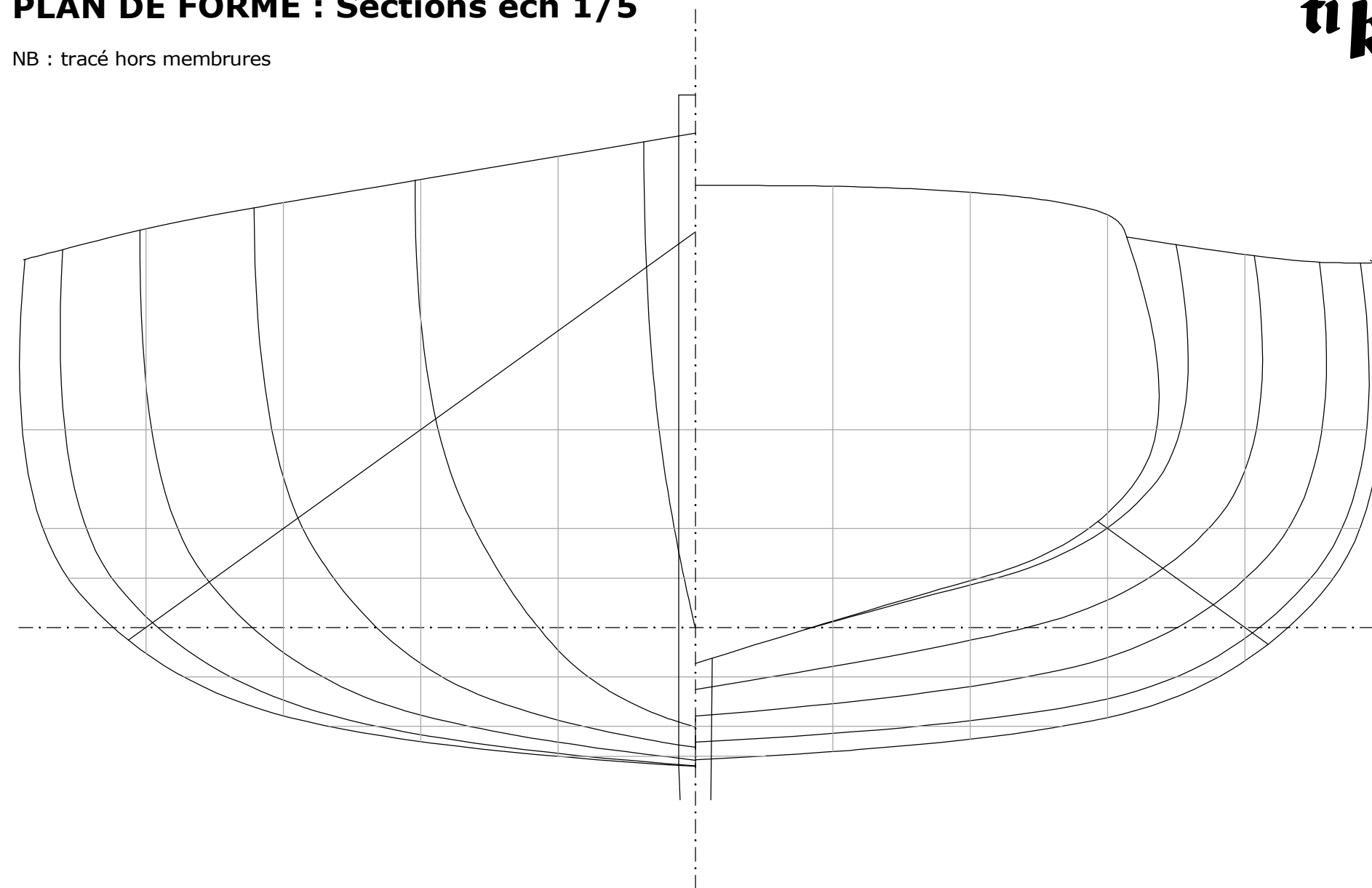
ti k

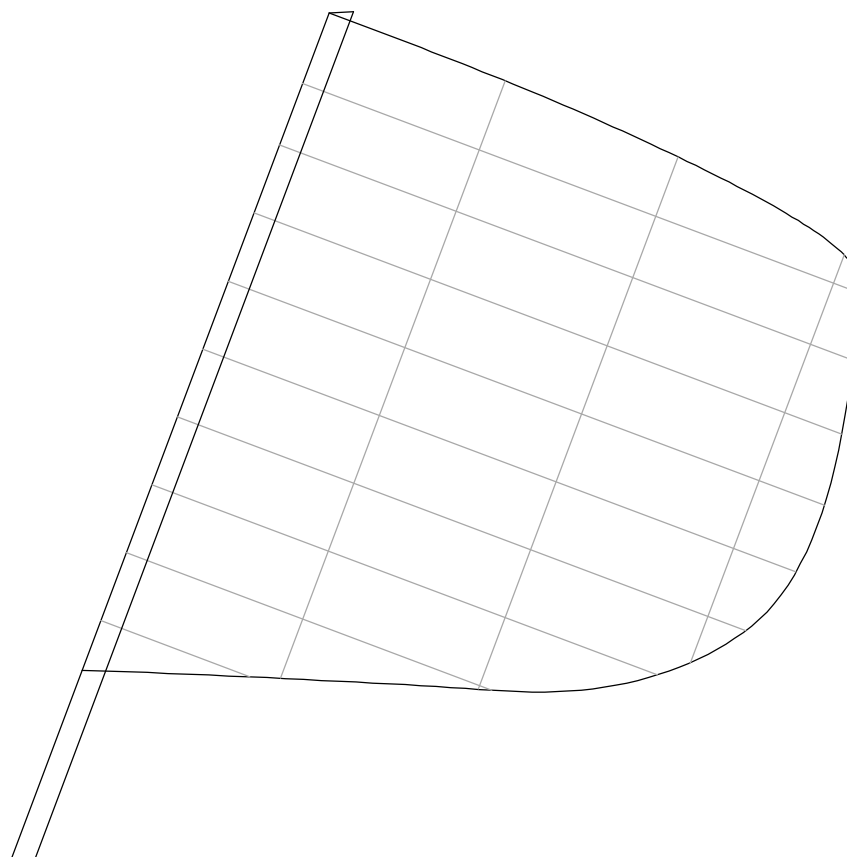




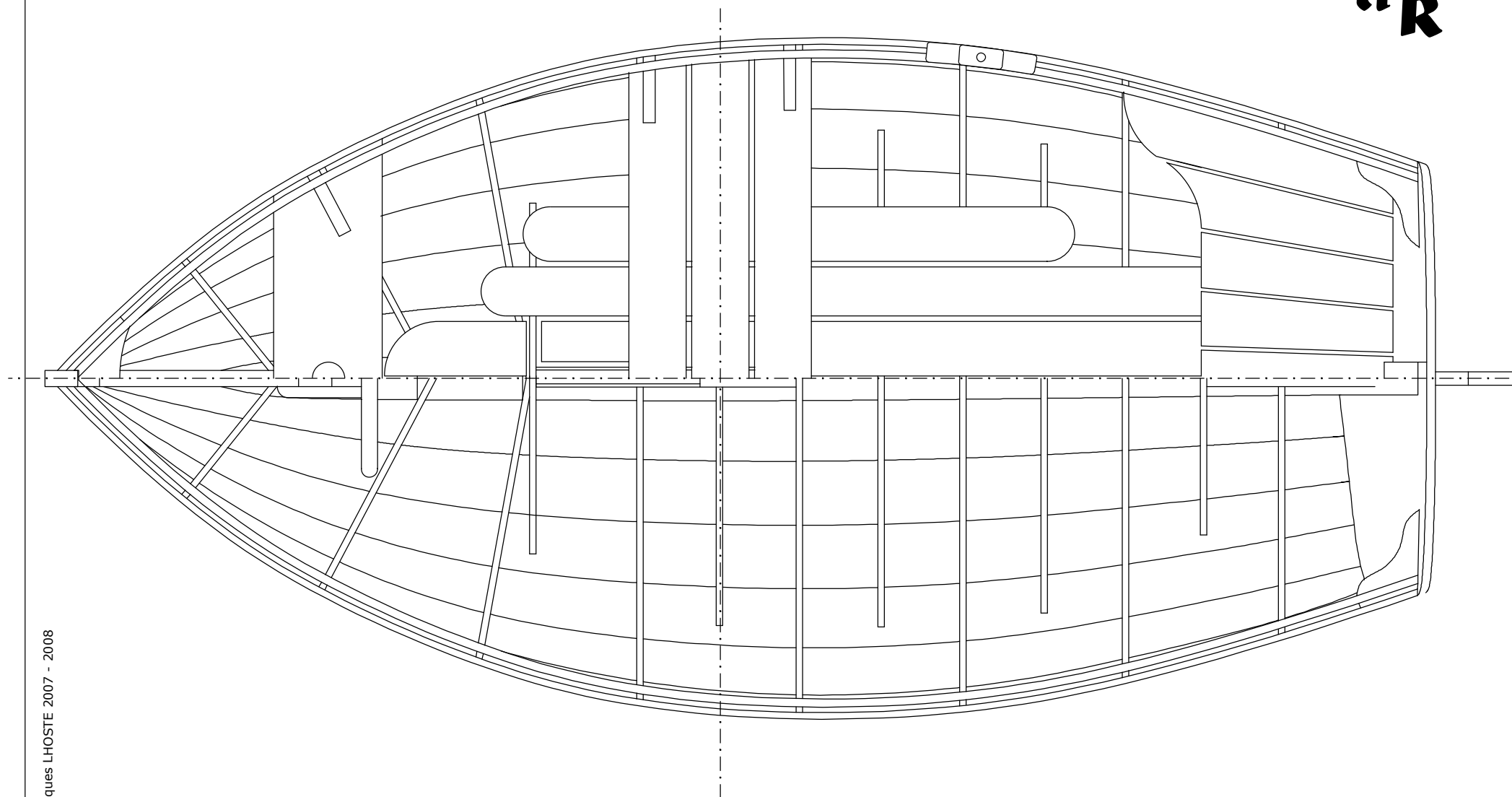
PLAN DE FORME : Sections ech 1/5

NB : tracé hors membrures

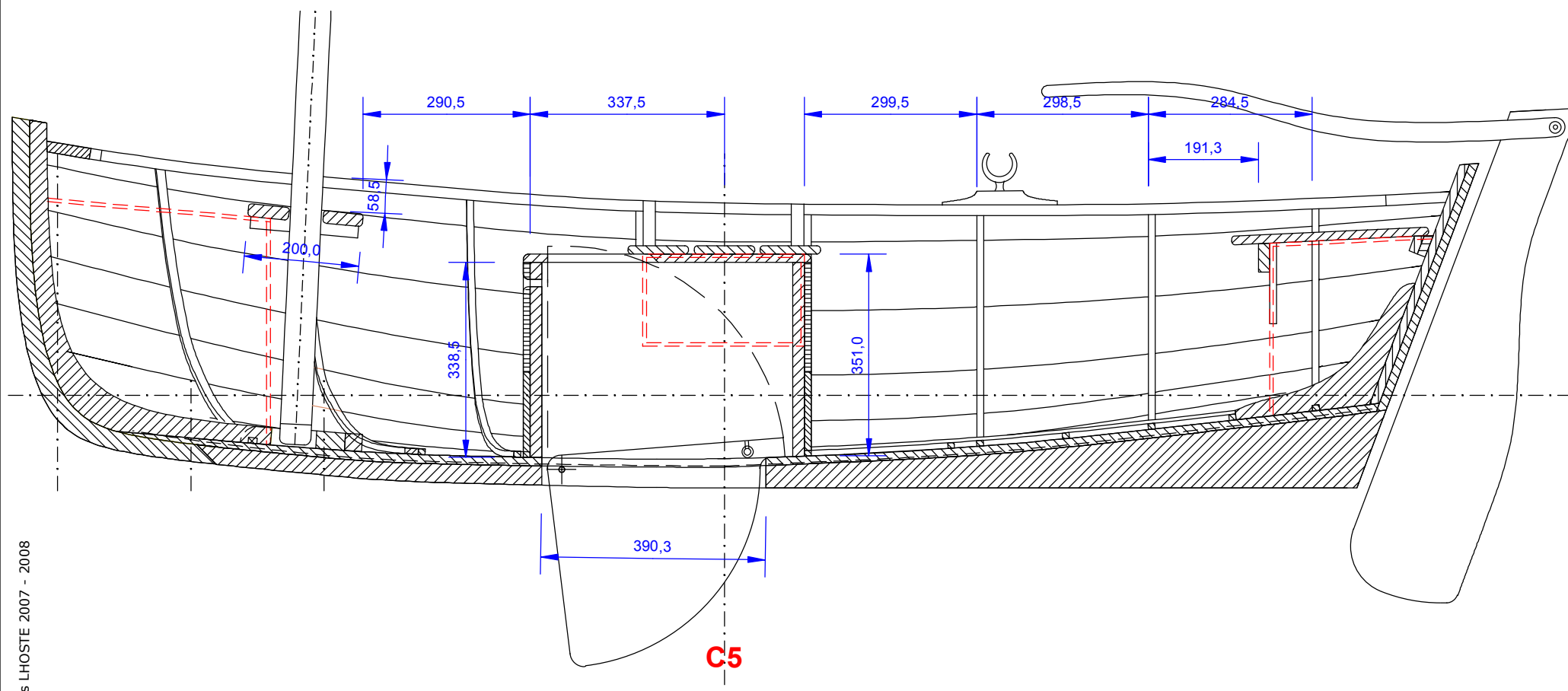


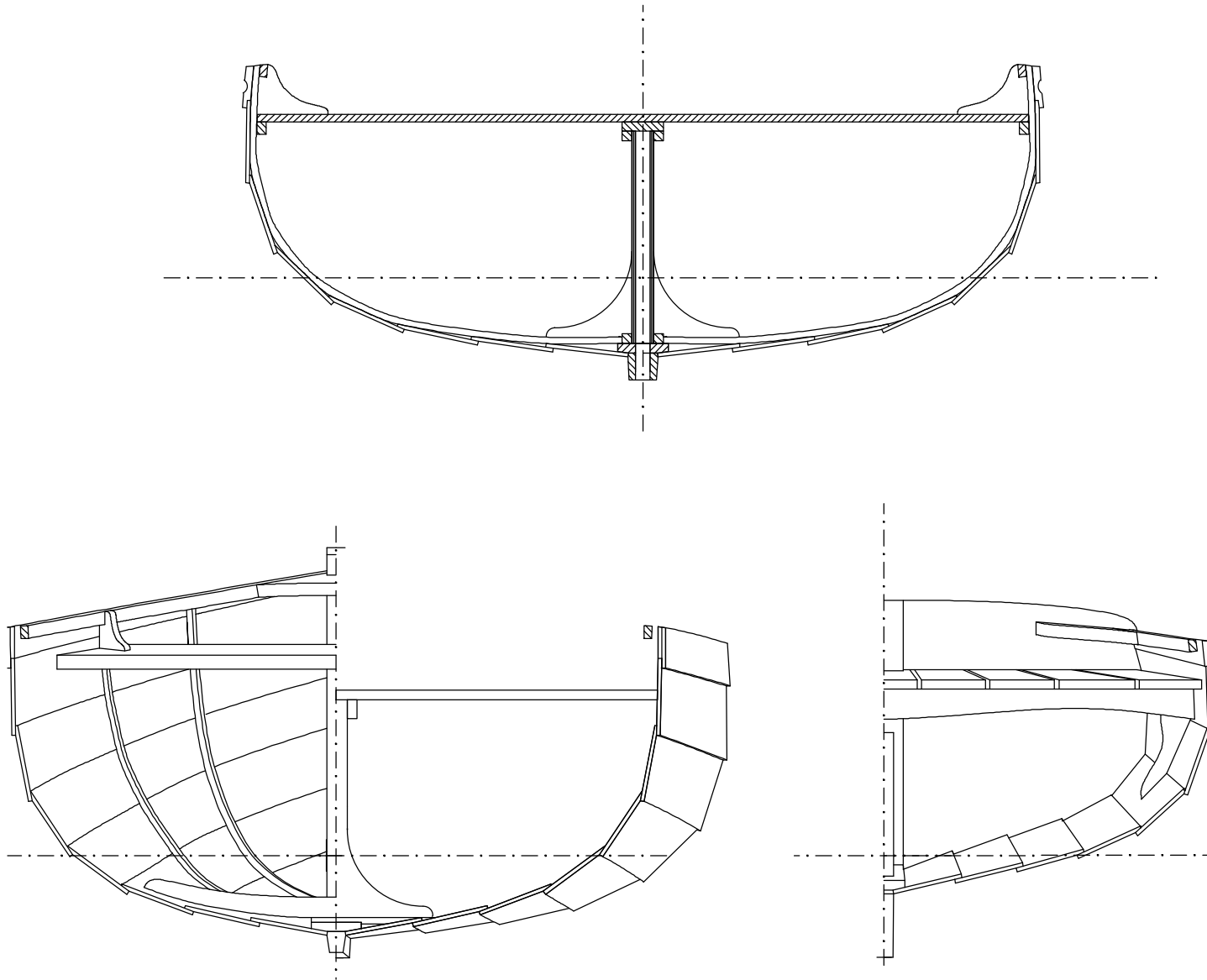


PLAN DE FORME : Tableau rabattu ech 1/5

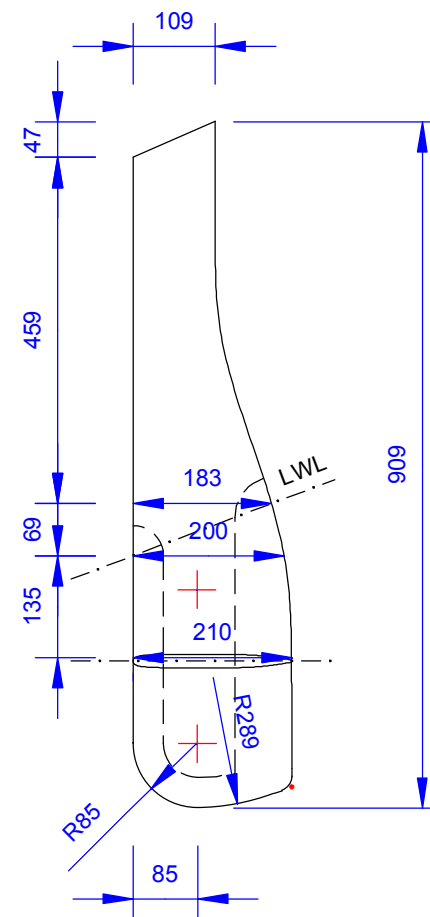
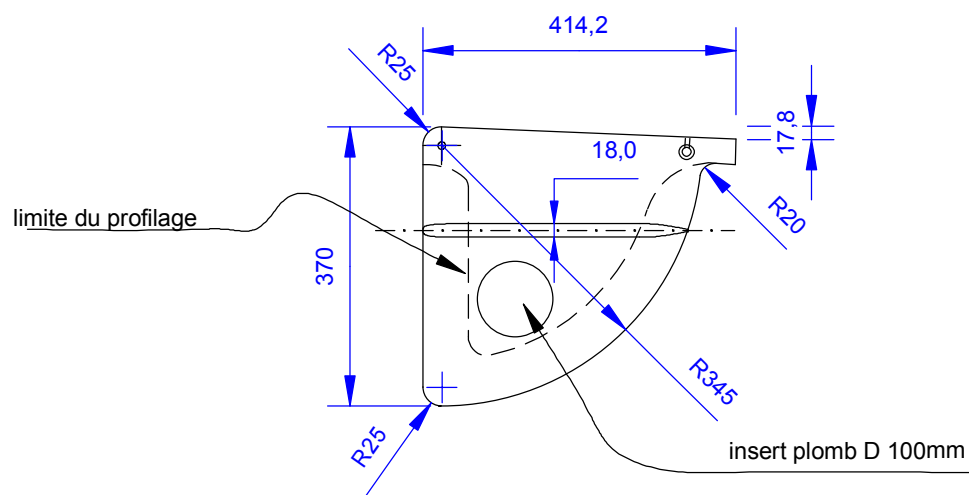
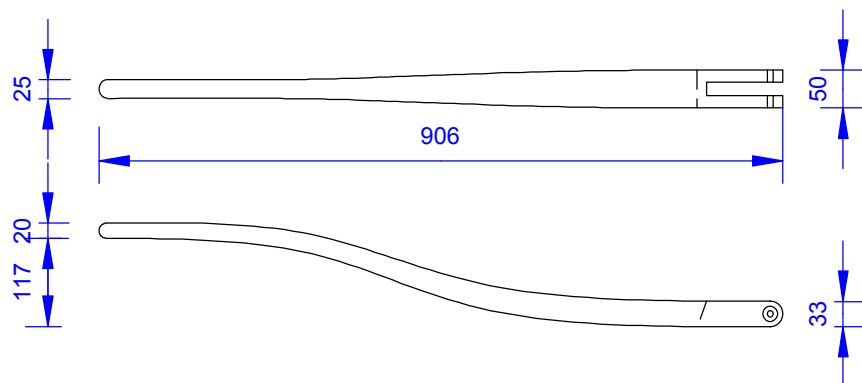


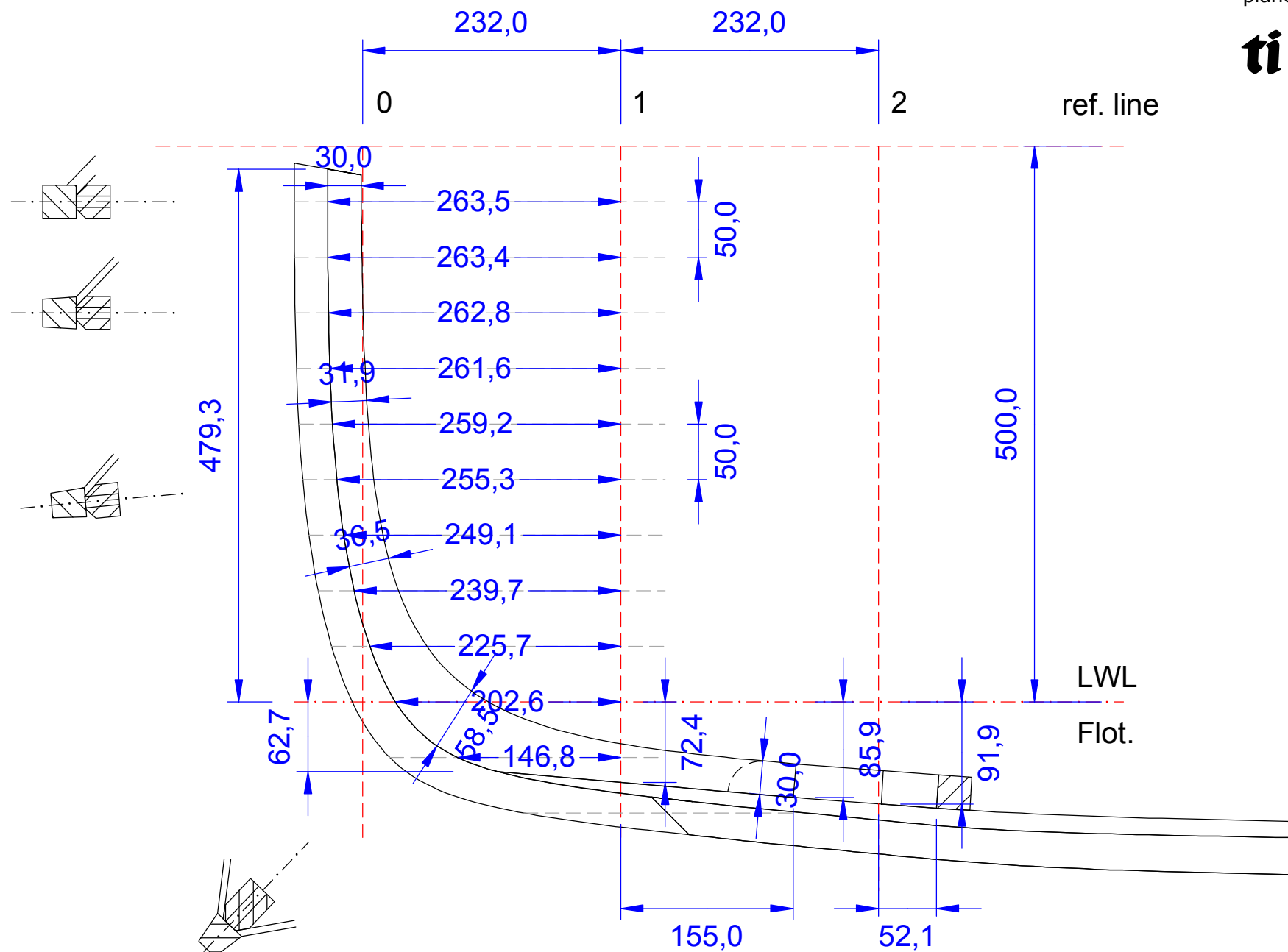
Aménagements : vue en plan ech. 1/10ème



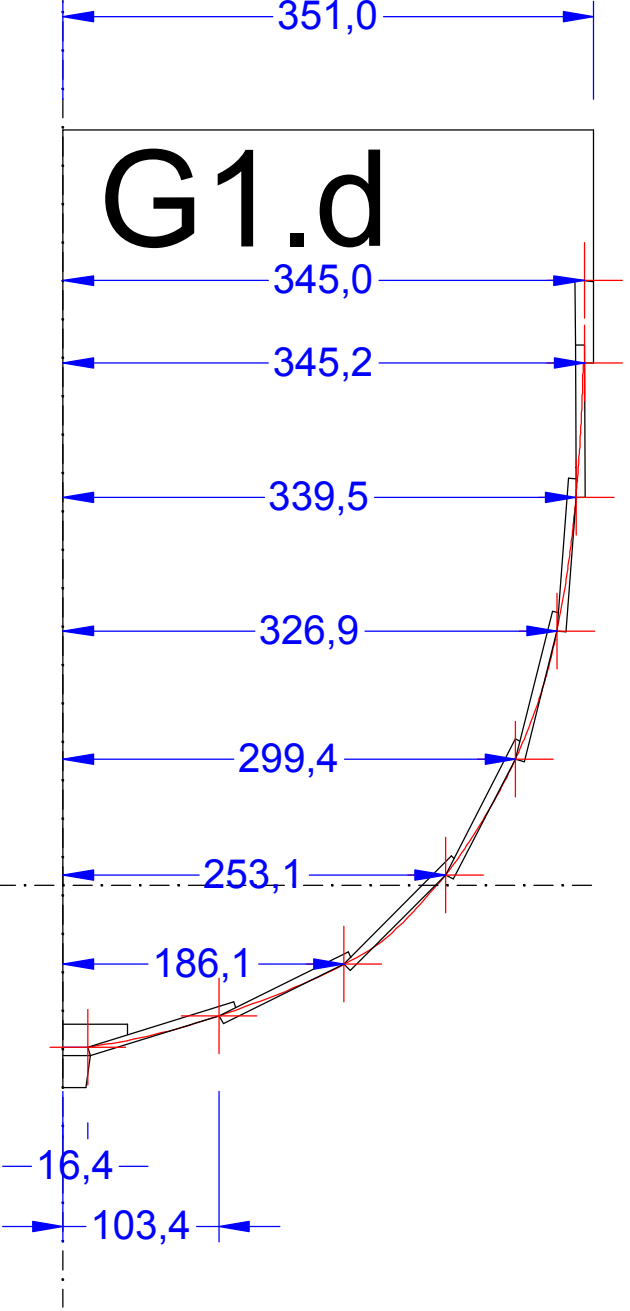
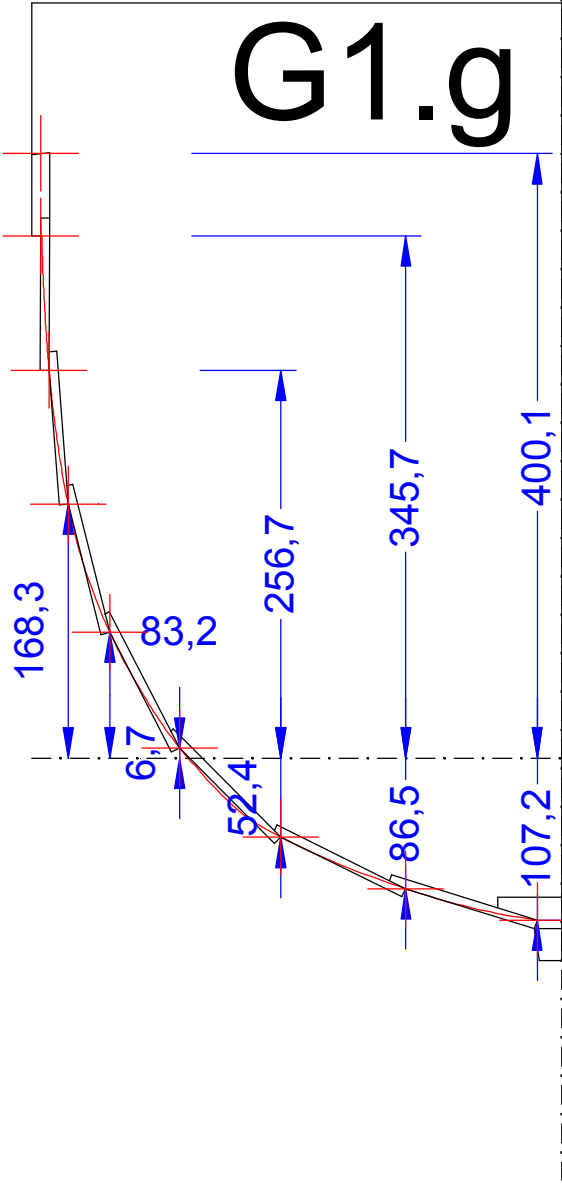


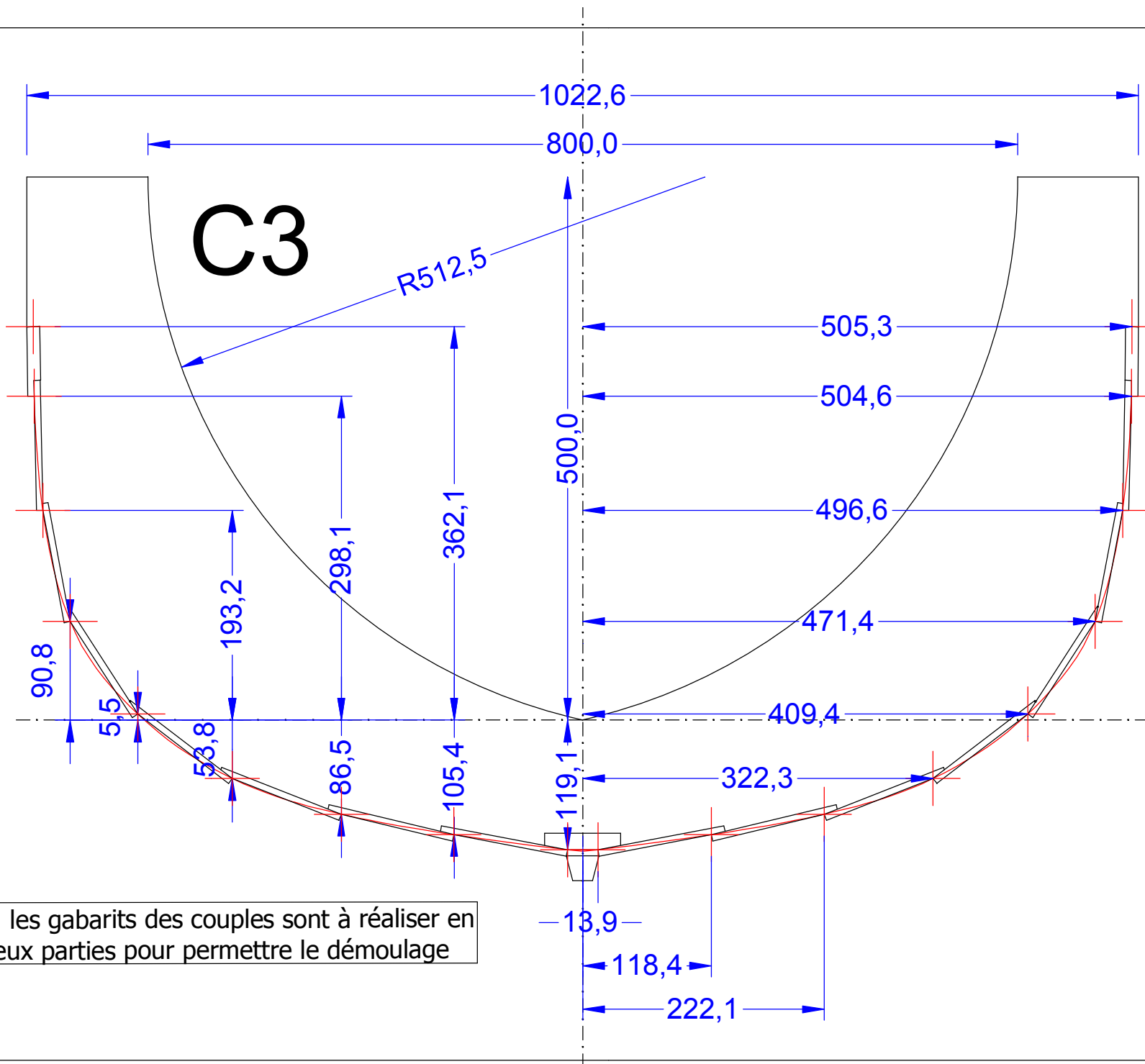
Aménagements : sections ech. 1/10ème





Tracé de l'étrave ech. 1/5ème





NB : les gabarits des couples sont à réaliser en deux parties pour permettre le démoulage

C5

planche 12

ti k

1232,4

610,2

614,4

608,9

568,1

480,2

22,9

139,9

256,4

371,7

500,0

335,9

268,2

81,0

102,6

115,7

124,7

151,3

41,3

36,3

C7

planche 13

ti k

154,3

47,5

27,1

270,4

332,3

67,4

500,0

84,9

98,7

103,3

18,5

134,4

249,9

364,5

473,3

562,2

607,4

611,6

605,3

1222,7

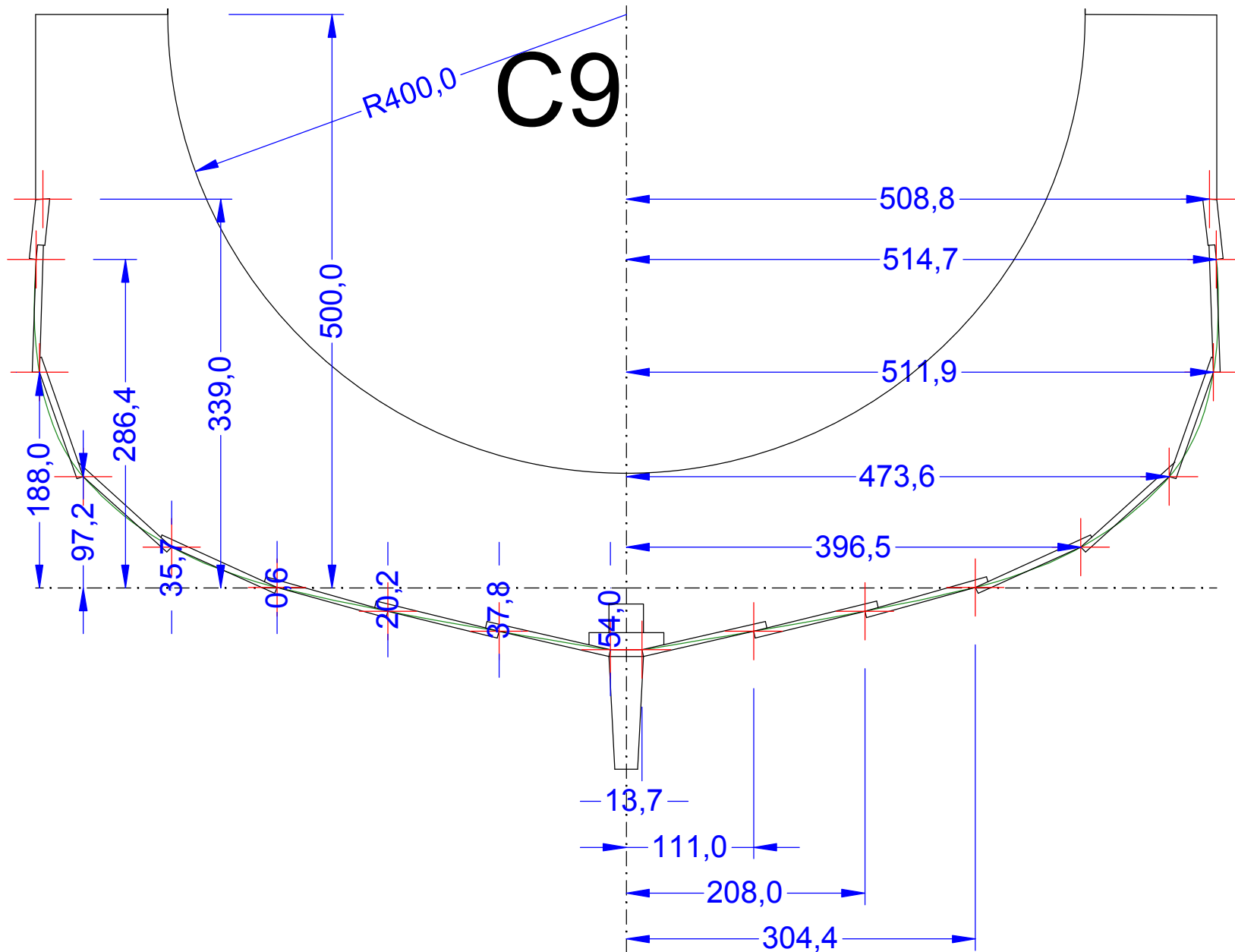
1029,9

planche 14

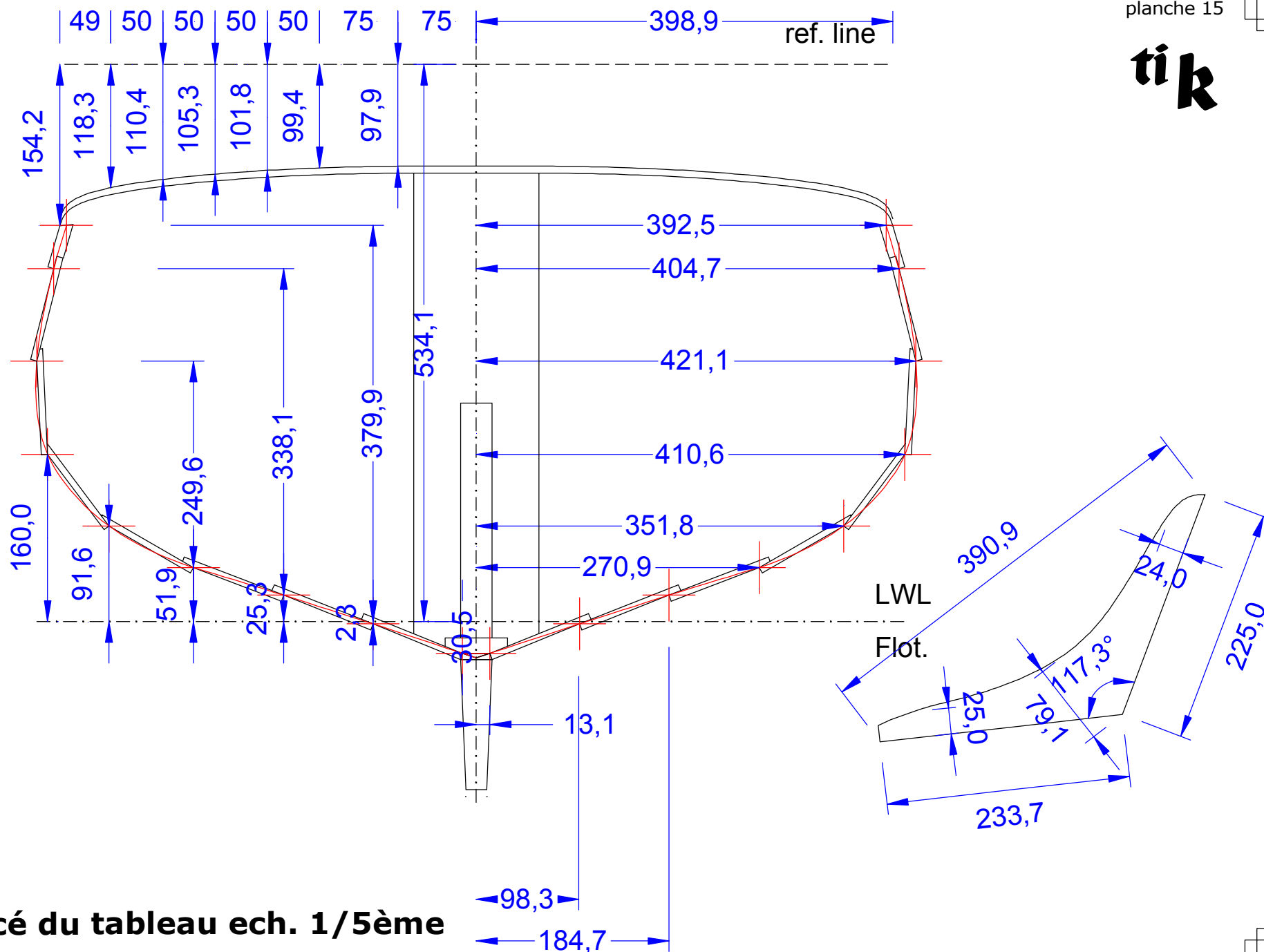
ti k

R400,0

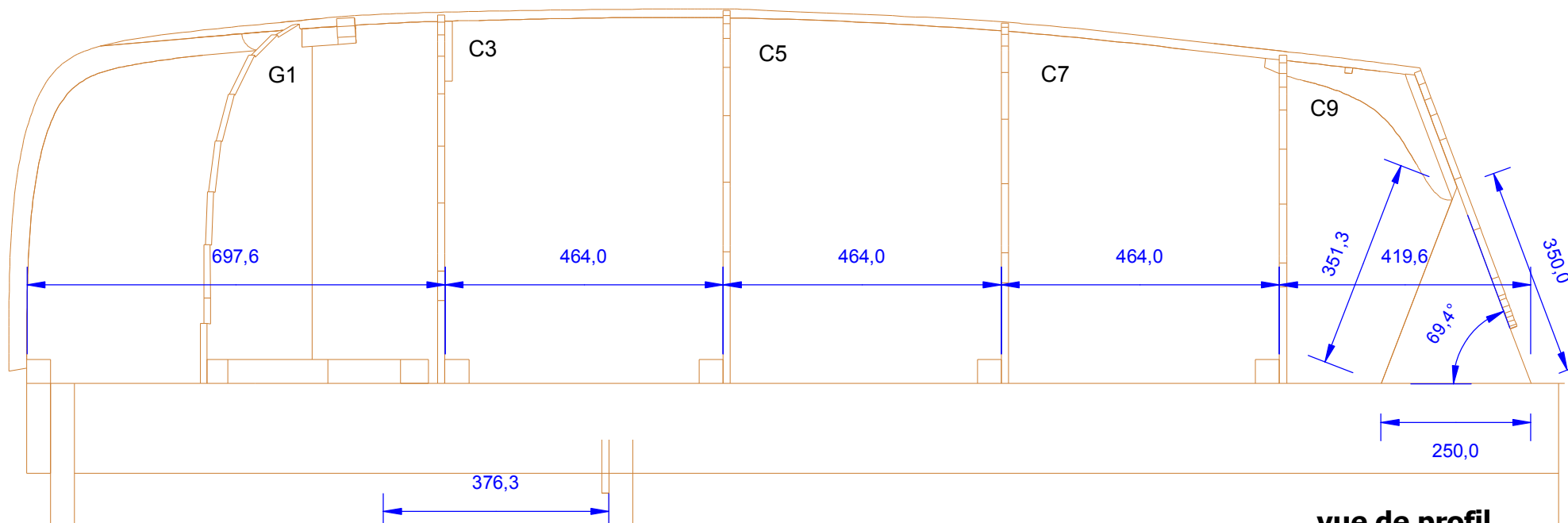
C9



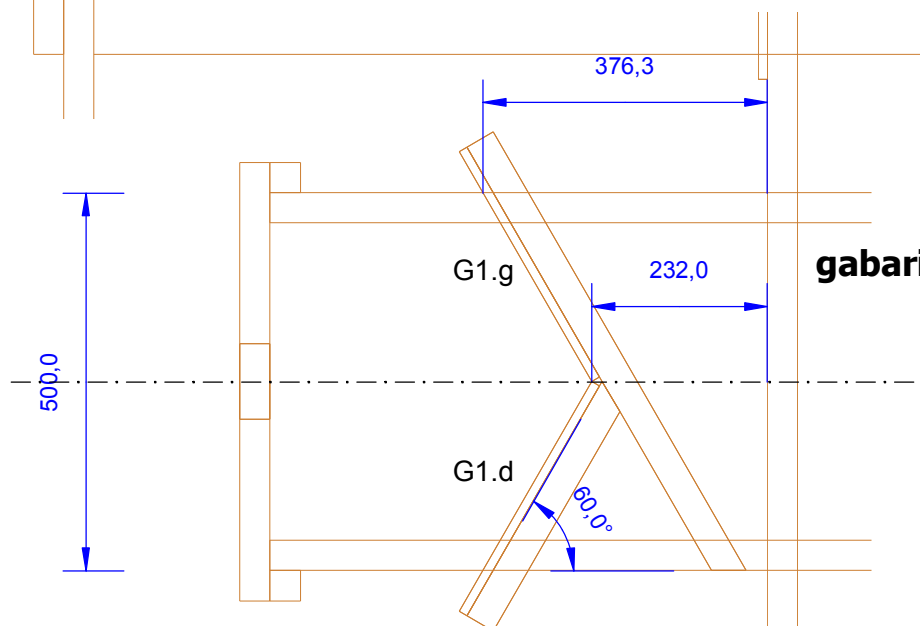
ti k



Tracé du tableau ech. 1/5ème



vue de profil

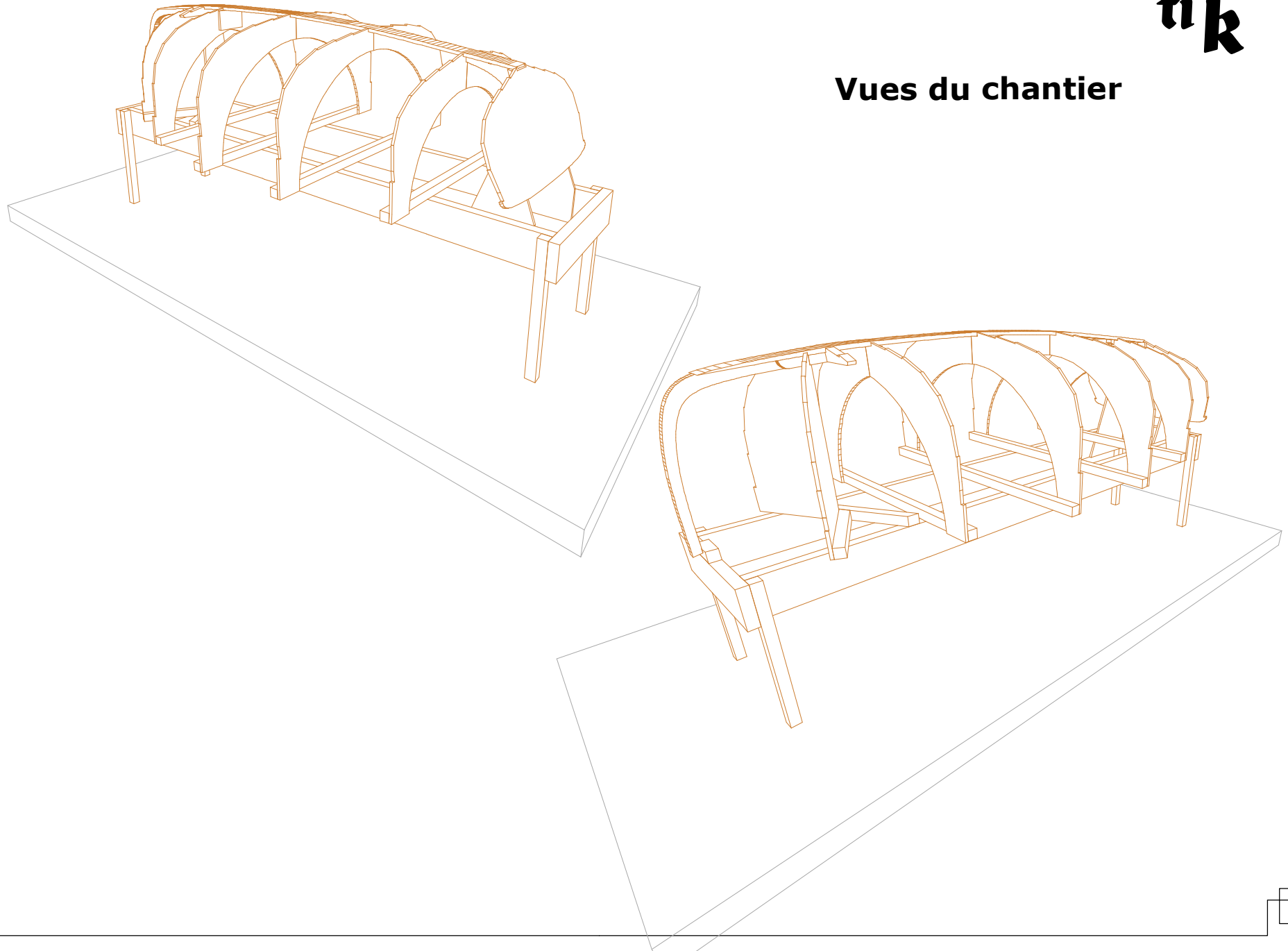


gabarits G1 à l'avant, vue en plan

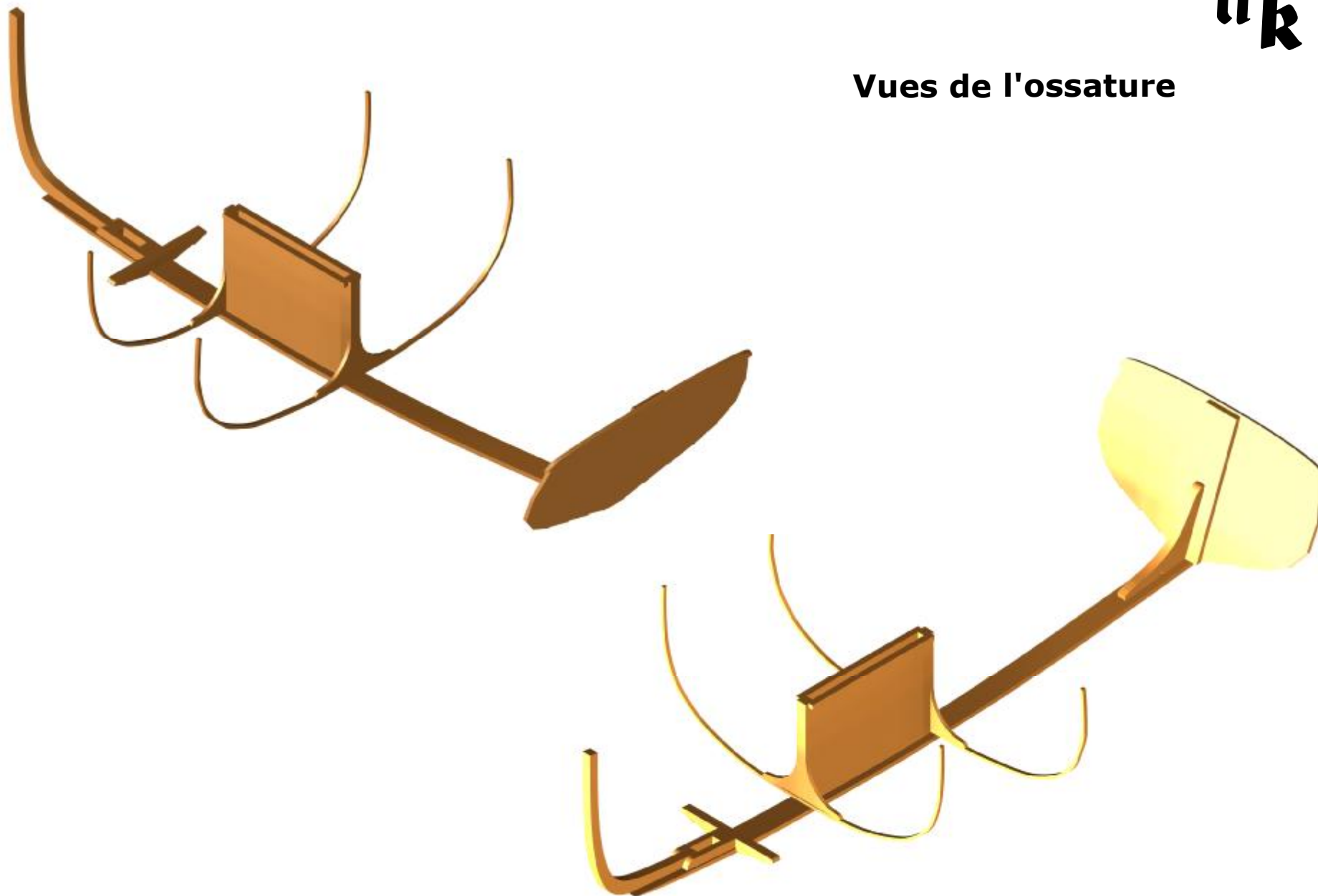
attention aux faces de référence !

Positionnement des gabarits ech. 1/10ème

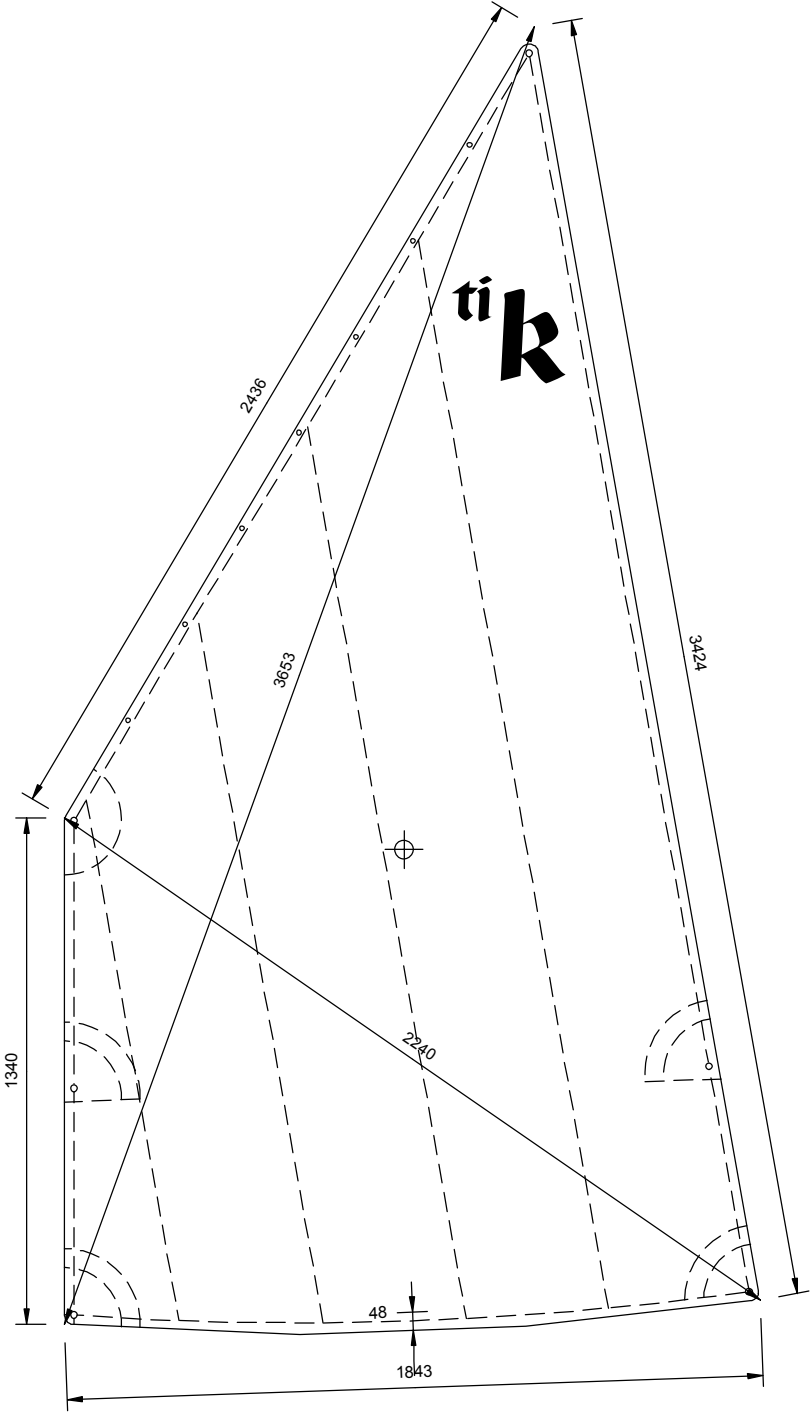
Vues du chantier



Vues de l'ossature

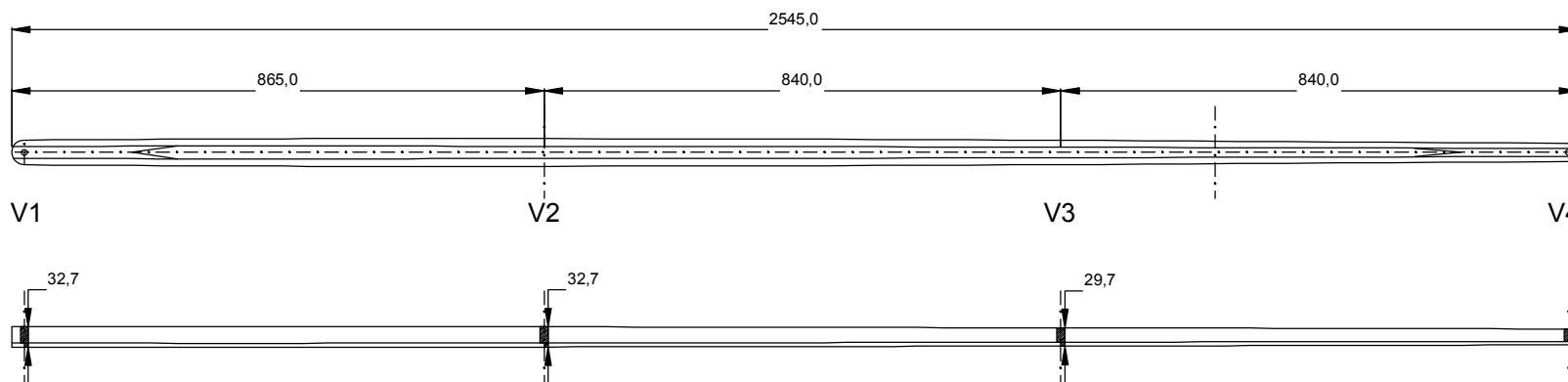


ti k

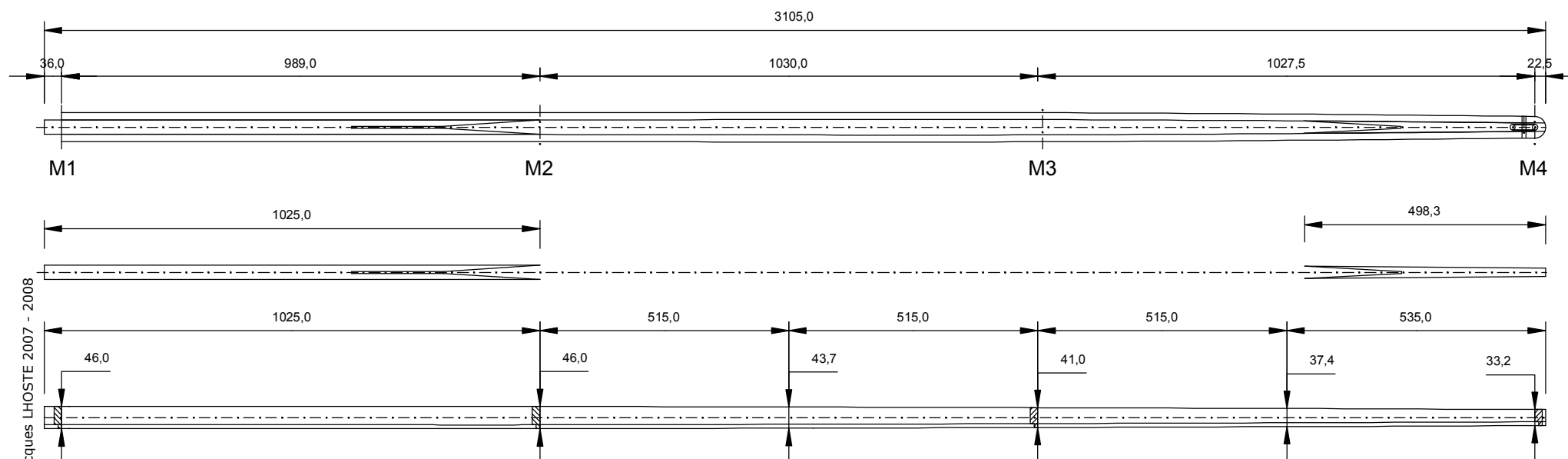


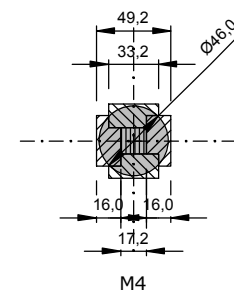
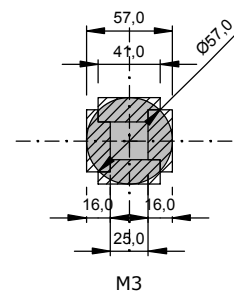
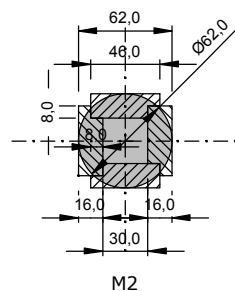
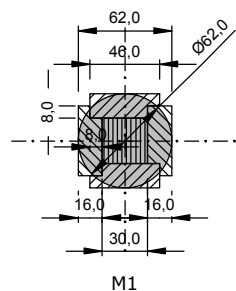
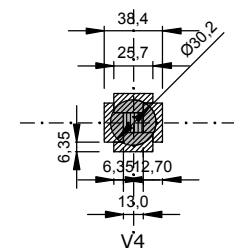
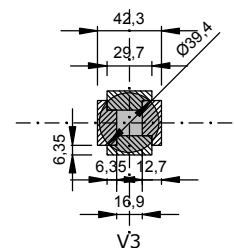
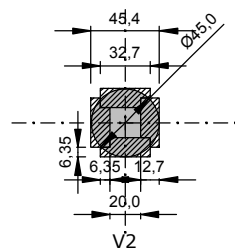
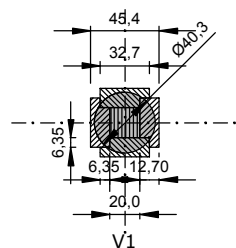
ti k

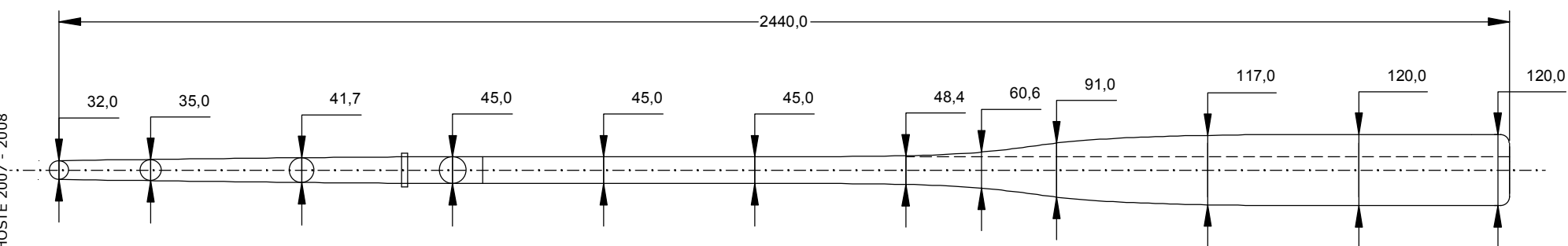
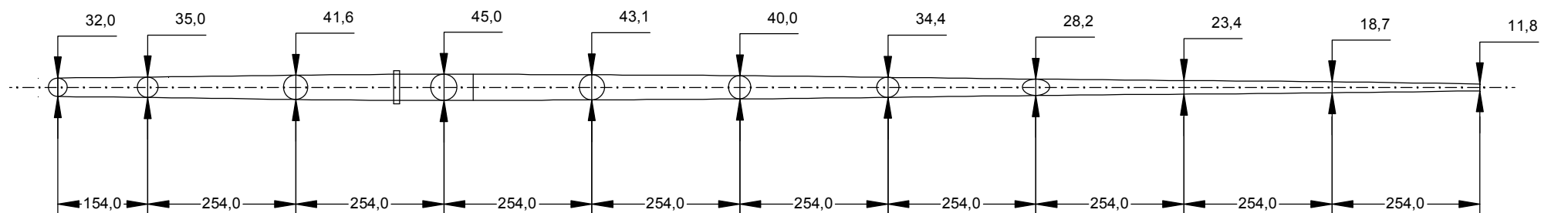
vergue

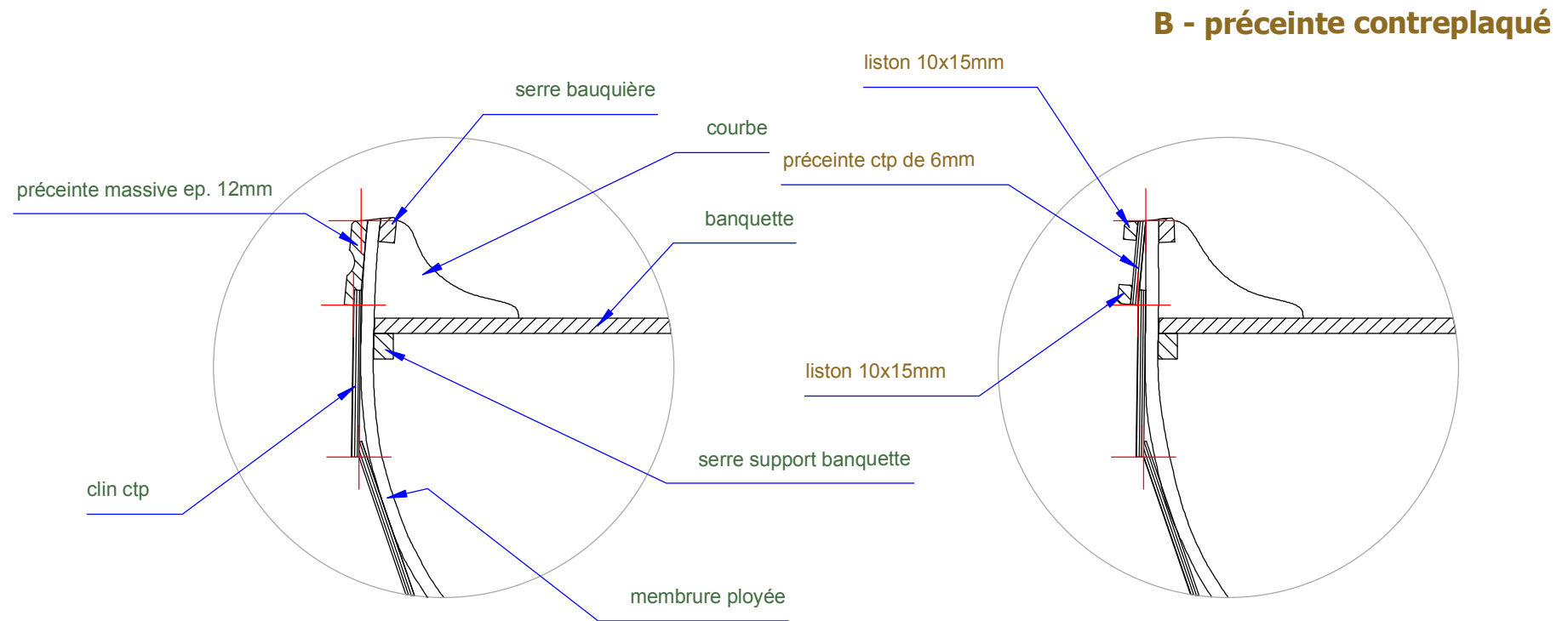


mat





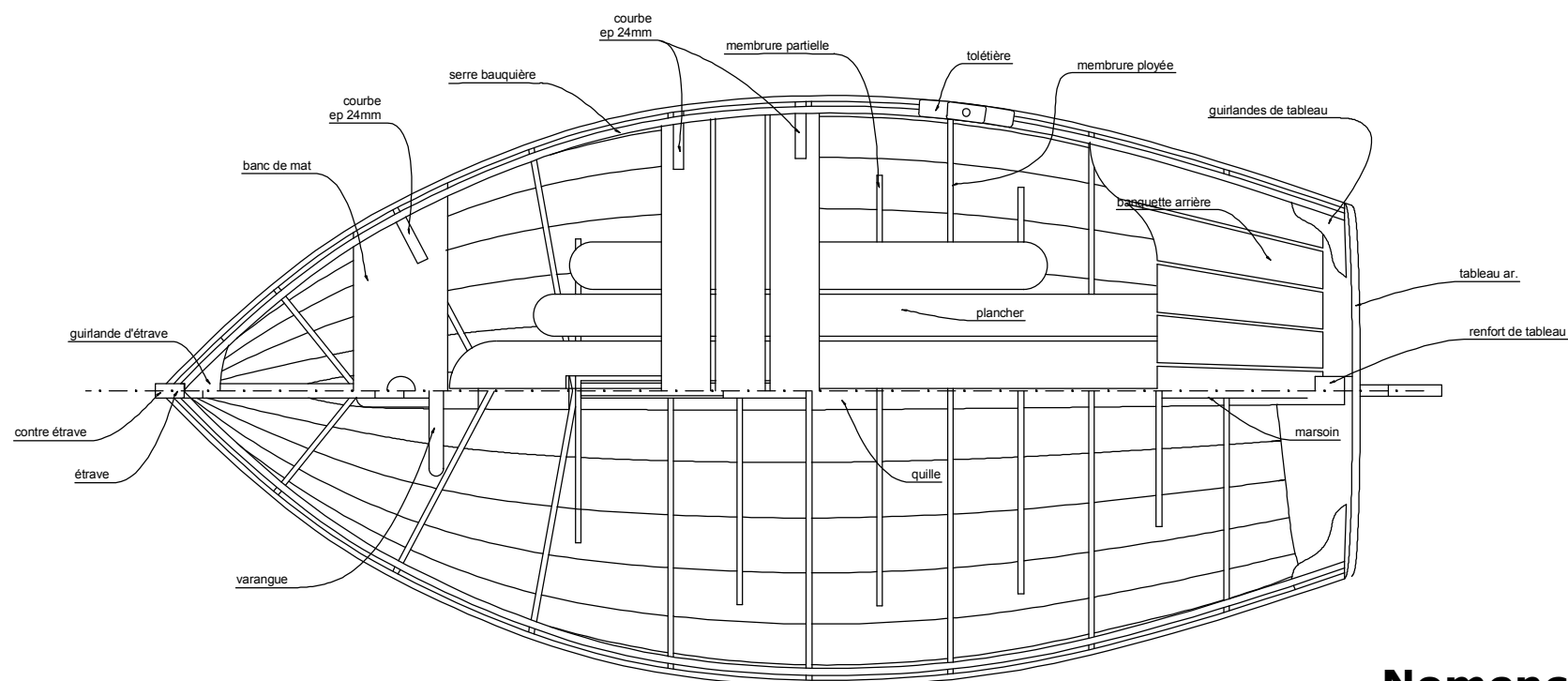
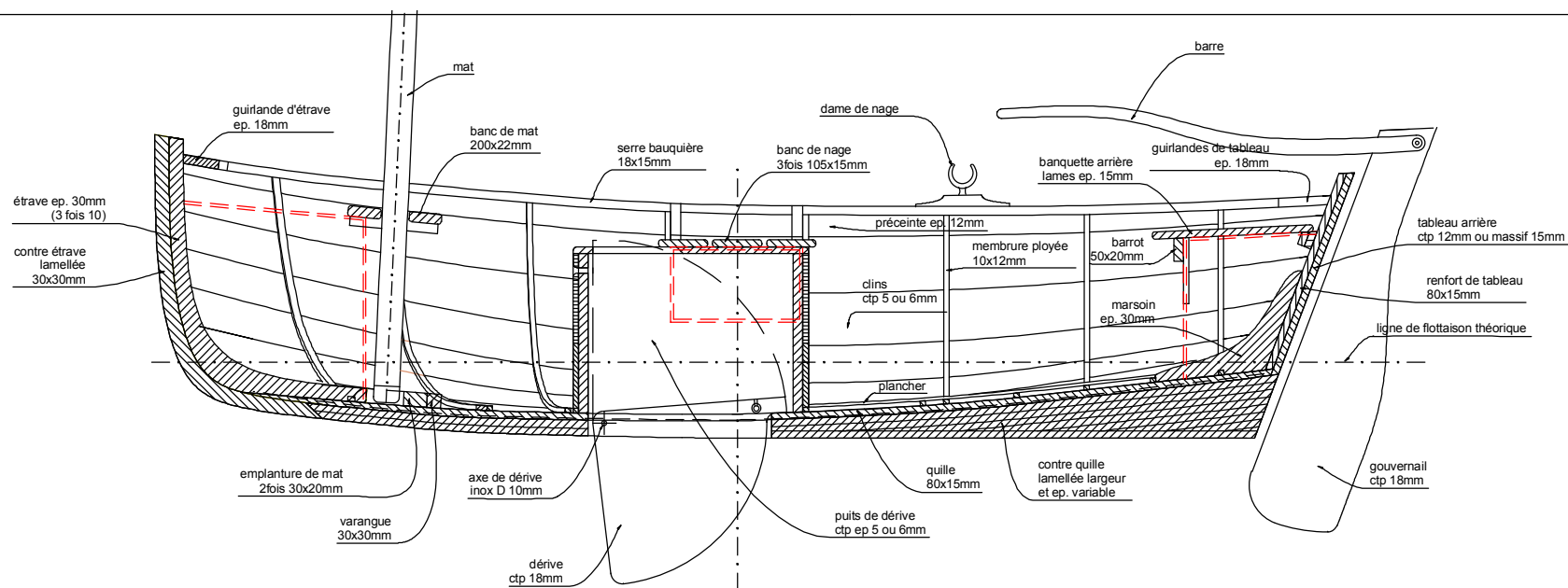




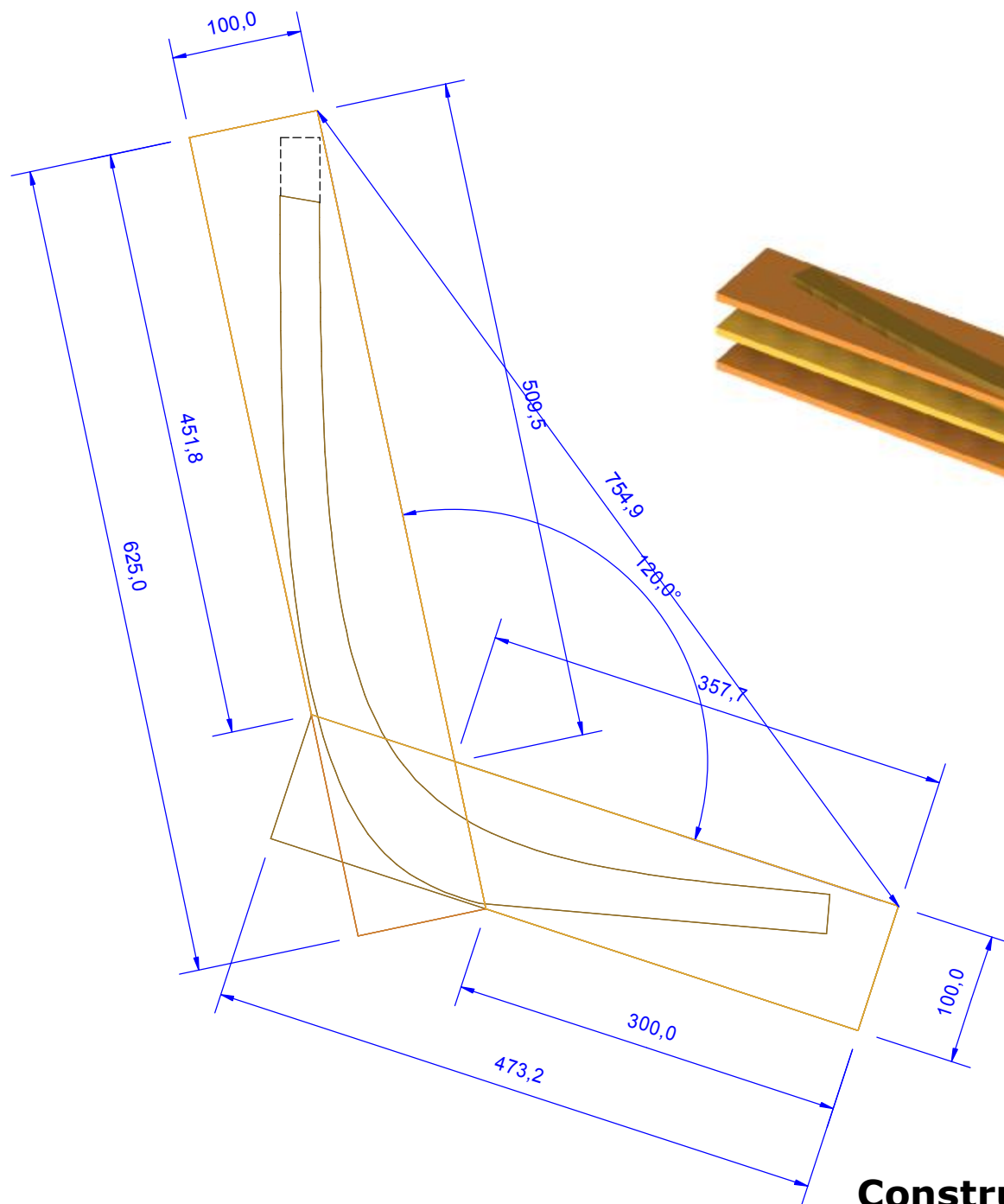
A - préceinte massive

B - préceinte contreplaqué

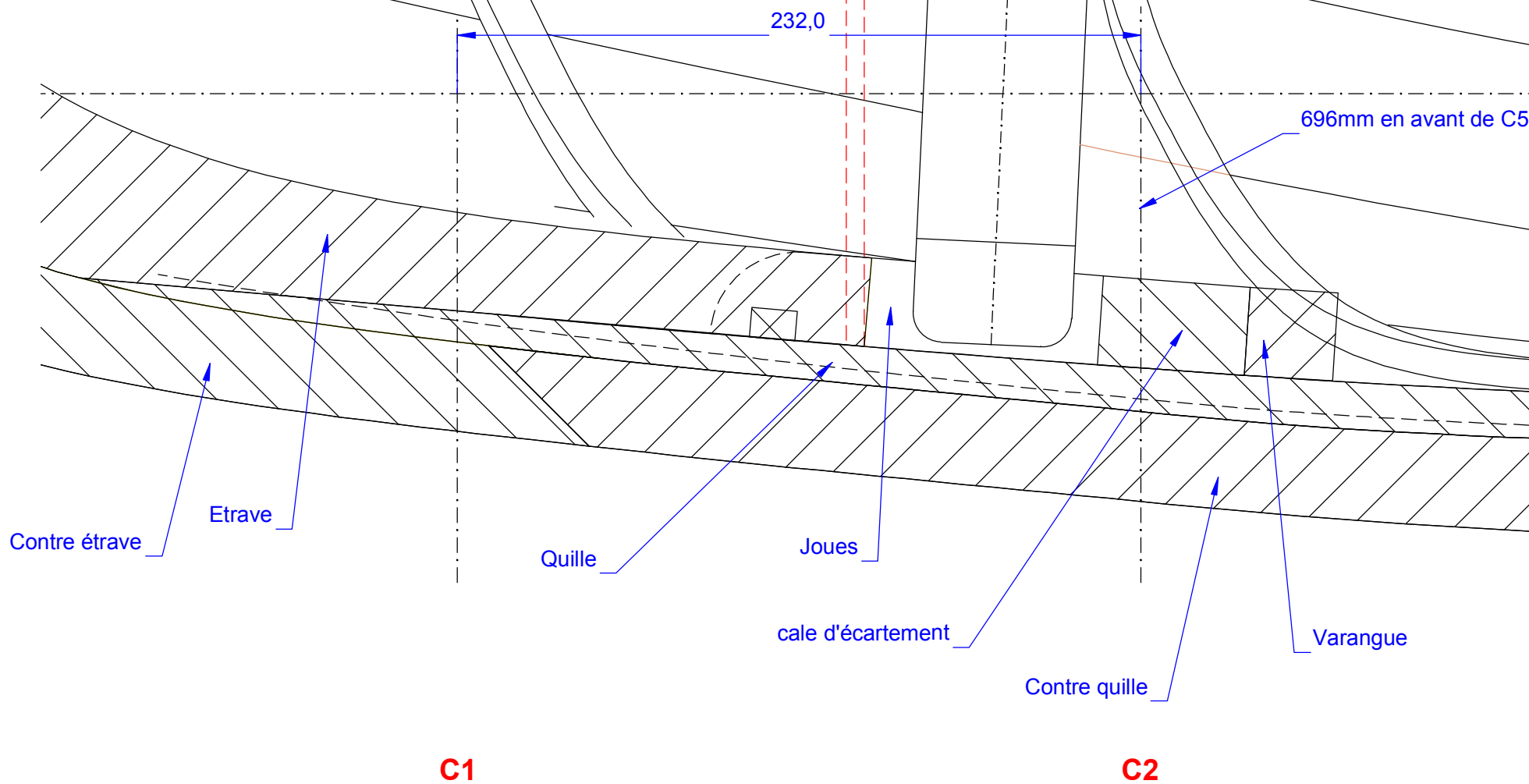
Variantes préceintes ech. 1/5ème



Nomenclature



Construction de l'étrave ech. 1/5ème



Détail emplanture ech. 1/2